

BRIEFING NOTES FOR D82 and D40

Pay careful attention to page T4, T1.1 Tender notice and invitation to tender as the most important information is highlighted there.

Pay special attention to all the pages that contain this heading –

Failure to complete, sign and date this form or failure to acknowledge receipt of each Addendum issued or failure to return with the quotation submission a complete copy of each Addendum issued shall result in the quotation being considered non-responsive in terms of subclause F.3.8 of the Conditions of Tender and such a quotation shall be rejected.

If this heading is displayed and a contractor feels that it is N/A and does not sign the page, the tender will be non-responsive. The content may be marked as N/A if so applicable as is generally the case with Page T13 but the Bidder must still sign and date the required spaces as instructed. Please note initialling the bottom of the page is not seen as a signature it is simply acknowledging that the bidder has seen the page and is aware of what is in his/her document.

Page T14 must be completed in full. Pay special attention to the highlighted sections-

SUPPLIER COMPLIANCE STATUS	TAX COMPLIANCE SYSTEM PIN:	OR	CENTRAL SUPPLIER DATABASE No:	MAAA
B-BBEE STATUS LEVEL VERIFICATION CERTIFICATE	TICK APPLICABLE BOX] <input type="checkbox"/> Yes <input type="checkbox"/> No	B-BBEE STATUS LEVEL SWORN AFFIDAVIT	[TICK APPLICABLE BOX] <input type="checkbox"/> Yes <input type="checkbox"/> No	
[A B-BBEE STATUS LEVEL VERIFICATION CERTIFICATE/ SWORN AFFIDAVIT (FOR EMES & QSEs) MUST BE SUBMITTED IN ORDER TO QUALIFY FOR PREFERENCE POINTS FOR B-BBEE]				
ARE YOU THE ACCREDITED REPRESENTATIVE IN SOUTH AFRICA FOR THE GOODS /SERVICES /WORKS OFFERED? [IF YES ENCLOSE PROOF]	<input type="checkbox"/> Yes <input type="checkbox"/> No	ARE YOU A FOREIGN BASED SUPPLIER FOR THE GOODS /SERVICES /WORKS OFFERED?	<input type="checkbox"/> Yes <input type="checkbox"/> No [IF YES, ANSWER PART B:3]	

Are you a foreign based supplier – This answer should generally be **No** and the bottom section (**QUESTIONNAIRE TO BIDDING FOREIGN SUPPLIERS**) does not need to be completed as the contractor has already indicated that he is not a foreign based supplier.

T15 must be completed and signed thus accepting the terms for bidding.

SBD 4, 8 and 9 are extremely important and failing to answer all the questions as required also lead to a bidder’s offer being non-responsive. This has occurred on numerous occasions.

SBD 6.1 Note 6.1 must be completed to claim BBBEE Points. It should be completed as follows:

B-BBEE Status Level of Contributor: 1 (As the BBBEE level the bidder’s certificate or affidavit grants) = ...20 (Correlating points to level – see table 4.1) (maximum of 20 points)

SBD 6.2 is not applicable to this Contract as there is no imported items.

Returnable D - page T35, Generally the simplest and most frequent submission is a Sworn Affidavit. It should be noted that an affidavit must be an original that is certified by a commissioner of oaths. If a copy is submitted the contractor will not be awarded any preferential points and therefore lose out on 20 points. On the Affidavit one question is regarding the financial year for which the affidavit is done. This must be the latest financial year and not older than 12 months from date of closing of the bid, but also this time cannot be in the future, e.g. February 2022. All provisions for disclosing information under Oath must be complied with to ensure the affidavit is acceptable. For BBBEE certificate – these must be submitted as a copy – no need of certification.

Returnable E - page T36 must be completed and signed by all members/directors. If one of the members/directors fails to sign it is seen as a non-responsive document due to the directors/members not being aware of the tender submission. Also ensure that the specimen signature does appear on the resolution letter of the company owners attached to this returnable.

Returnable G - page T38 must be completed and have CV's attached as is indicated at the top of the Page. G2 has been redacted and it is not necessary to complete this section.

Returnable J - page T43 Must be signed, dated and completed as indicated on the bottom of page T44. Please follow the instructions on page T43 on how to calculate the minimum labour percentage and note that the specified minimum labour percentage is 4% as indicated. While tendering below the minimum is no longer a disqualification criterion, a penalty would apply to the bid if awarded for not achieving the minimum target.

Returnable K - page T45 Must be completed correctly and signed. This should be read and completed accordingly. Question 3 has three sub headings. Generally, the contractor will answer yes to only one of these. The corresponding number in question 4 must then also be completed. Example – If 3(a) is answered yes then the contractor must answer 4(a) as well, If 3(b) then 4(b) etc

Page C3 as the form of offer must be signed and the amount in words must be completed failure to do this will invalidate the tender.

Please check that the amount on C3(For of Offer) and C39(BOQ Summary) match.

On a contractual note the following must be mentioned:

The construction period is 6 months and failure to complete the project within the specified timeframe will result in penalties. It is of extreme importance that these risks be factored into the pricing of the documents as the bidders' price is also compared to realistic market value of the works that has been assessed by a third party to guide if the quoted price is reasonable.

C4.1 LOCALITY PLAN

District Road 40 is located to the far North East of the New Hannover area. Access to this road can be achieved by travelling on P156-1 from New Hannover for approximately 13.5 KM before turning onto P278. Once on P278, travel 16.5 KM before reaching the start of D40. The location of the road can be seen in figure C4.1.

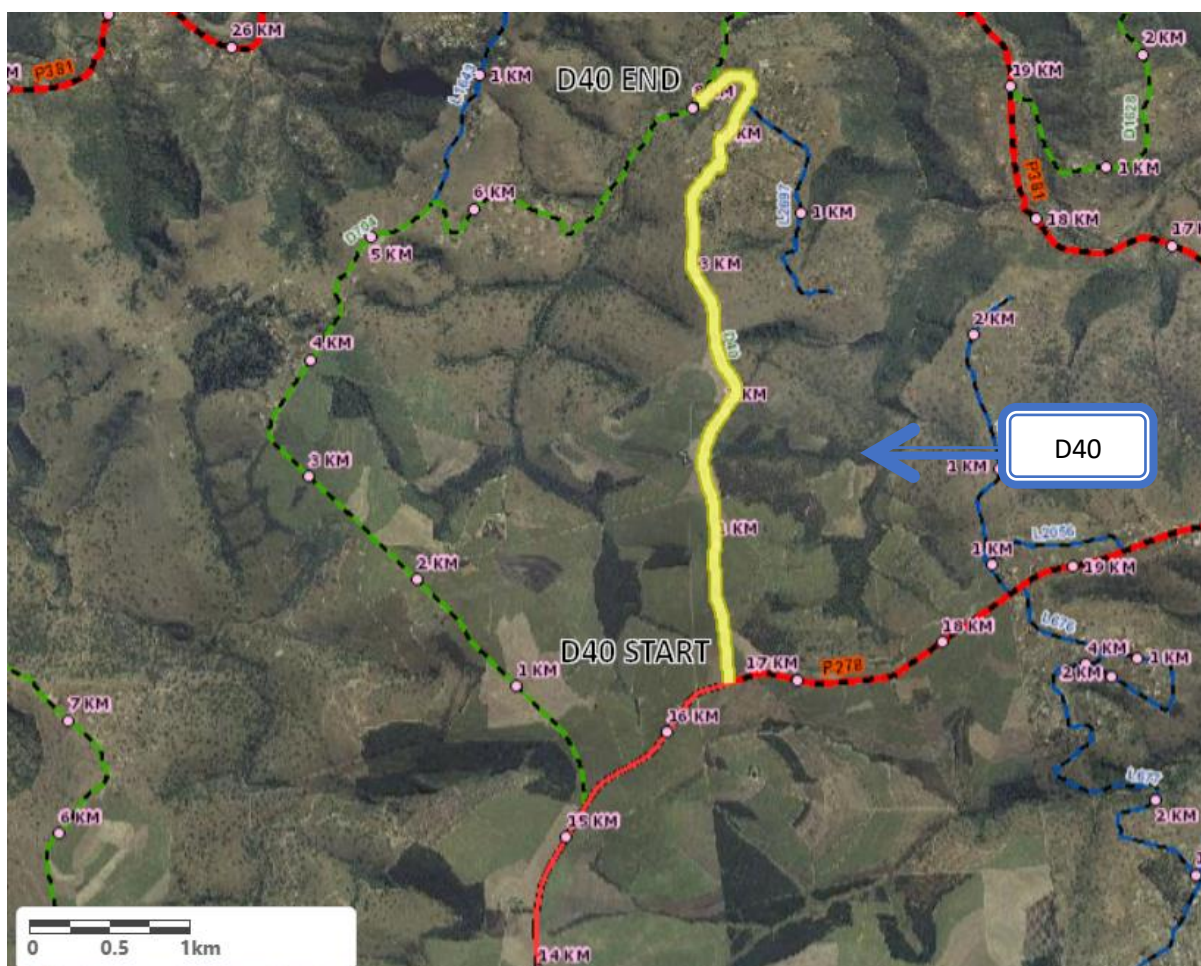


Figure C4.1 – Locality Plan of District Road 40

The approximate limits of construction can be seen in **Table C4.1**.

Table C4.1 – Approximate Start and End co-ordinates of D40

Km	Latitude	Longitude
D40 Km 0.00	29,26488°S	30,76492°E
D40 Km 3.00	29,23882°S	30,76290°E

PROJECT BACKGROUND

WARD: 3

TRIBAL COUNCIL: INkosi Ngubane- Traditional Council

FACILITIES AND SERVICES ALONG THE ROAD: , Schools, Hospital

TERRAIN: Mountainous

CONDITION OF THE CURRENT GRAVEL ON THE ROAD: LOSS OF GRAVEL MATERIAL AND SCOUR

ROUTE TO THE QUARRY : The quarry is located on road D704 it is 300m away from D40

Please see the photos below for some images of the roads condition and the borrow pit.

Road conditions



quarry



District Road 82 is located to the far North East of the Wartburg area. Access to this road can be achieved by travelling on P25-1 from Mountain Rise for approximately 30 KM to Wartburg. After passing Wartburg P25-1 turns into P63. Once on P63, travel for approximately 21.5 KM and the turn off to D82 will be on the left. The location of the road can be seen in figure C4.2.

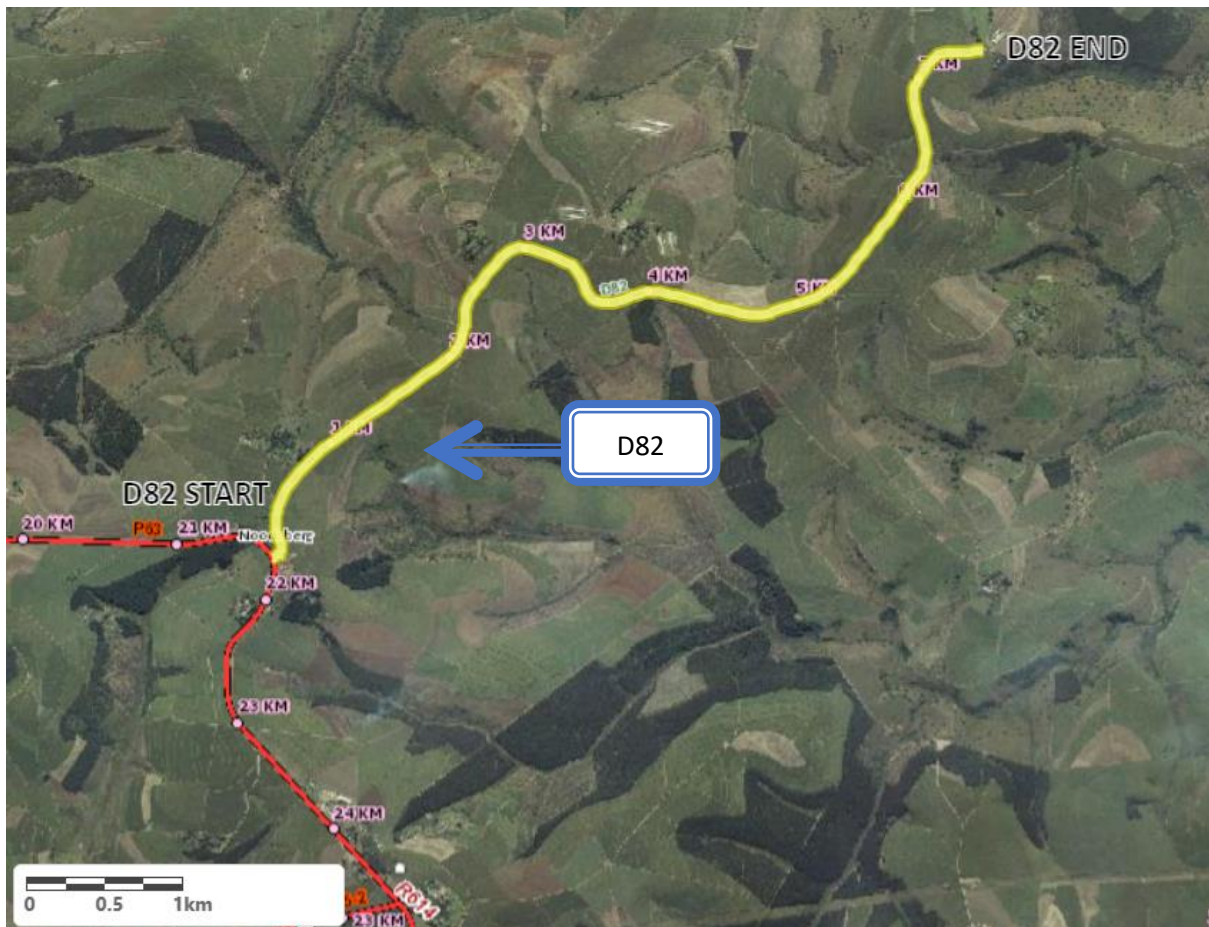


Figure C4.2 – Locality Plan of District Road 82

The approximate limits of construction can be seen in **Table C4.2**.

Table C4.2 – Approximate Start and End co-ordinates of D82

Km	Latitude	Longitude
D82 Km 0.000	29,37208°S	30,76149°E
D82 Km 7.515	29,33806°S	30,80872°E

PROJECT BACKGROUND

WARD: 3

TRIBAL COUNCIL: INkosi Ngubane Traditional Council

FACILITIES AND SERVICES ALONG THE ROAD: Schools, Hospital

TERRAIN: Mountainous

CONDITION OF THE CURRENT GRAVEL ON THE ROAD: LOSS OF GRAVEL MATERIAL AND SCOUR ON THE LHS

ROUTE TO THE QUARRY : The quarry is located

Average distance to the quarry is 1km.

Please see the photos below for some images of the roads condition and the borrow pit.

Road conditions



Quarry

